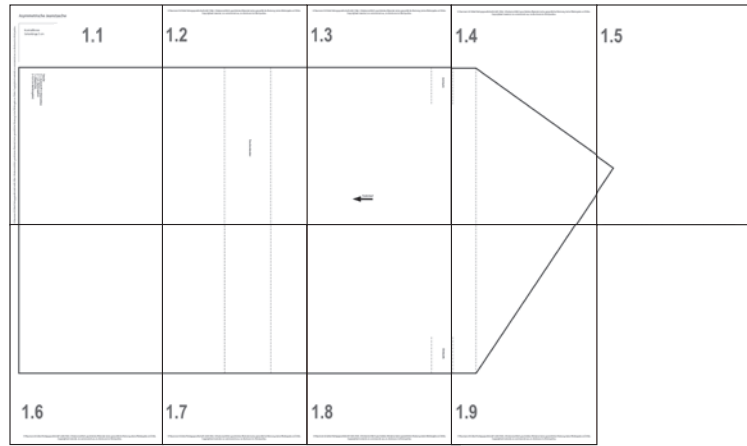


Asymmetrische Jeanstasche

Kontrolllinien
Seitenlänge 5 cm



1.1

Tasche
2 x Jeansstoff in Marineblau
(+ 1 cm Nahtzugabe)
1 x Bügelvlies
(+ 0,5 cm Nahtzugabe)

1.2

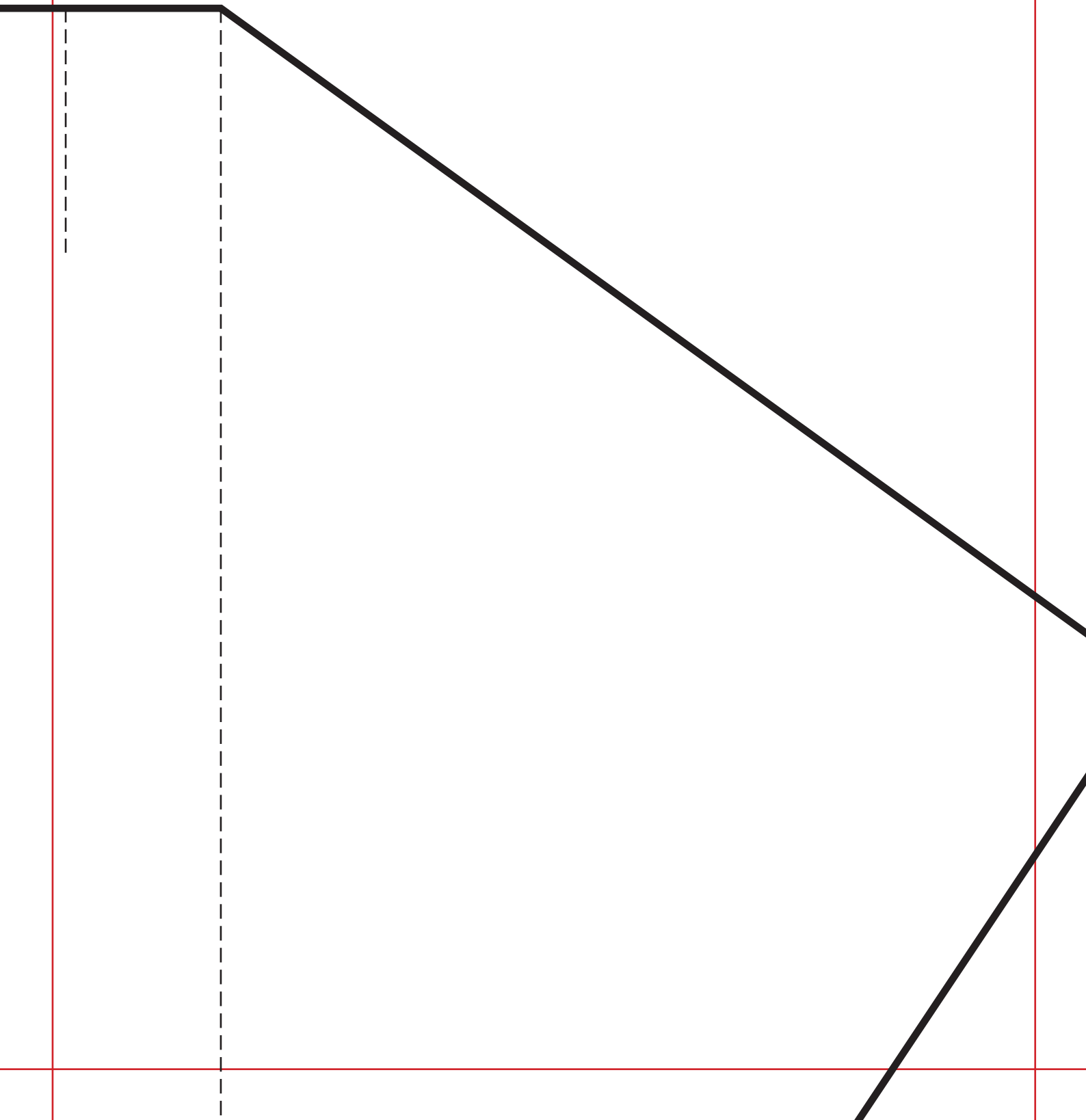
Taschenboden

1.3

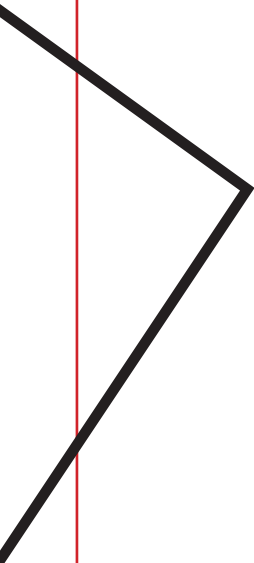
Schlaufe



1.4



1.5

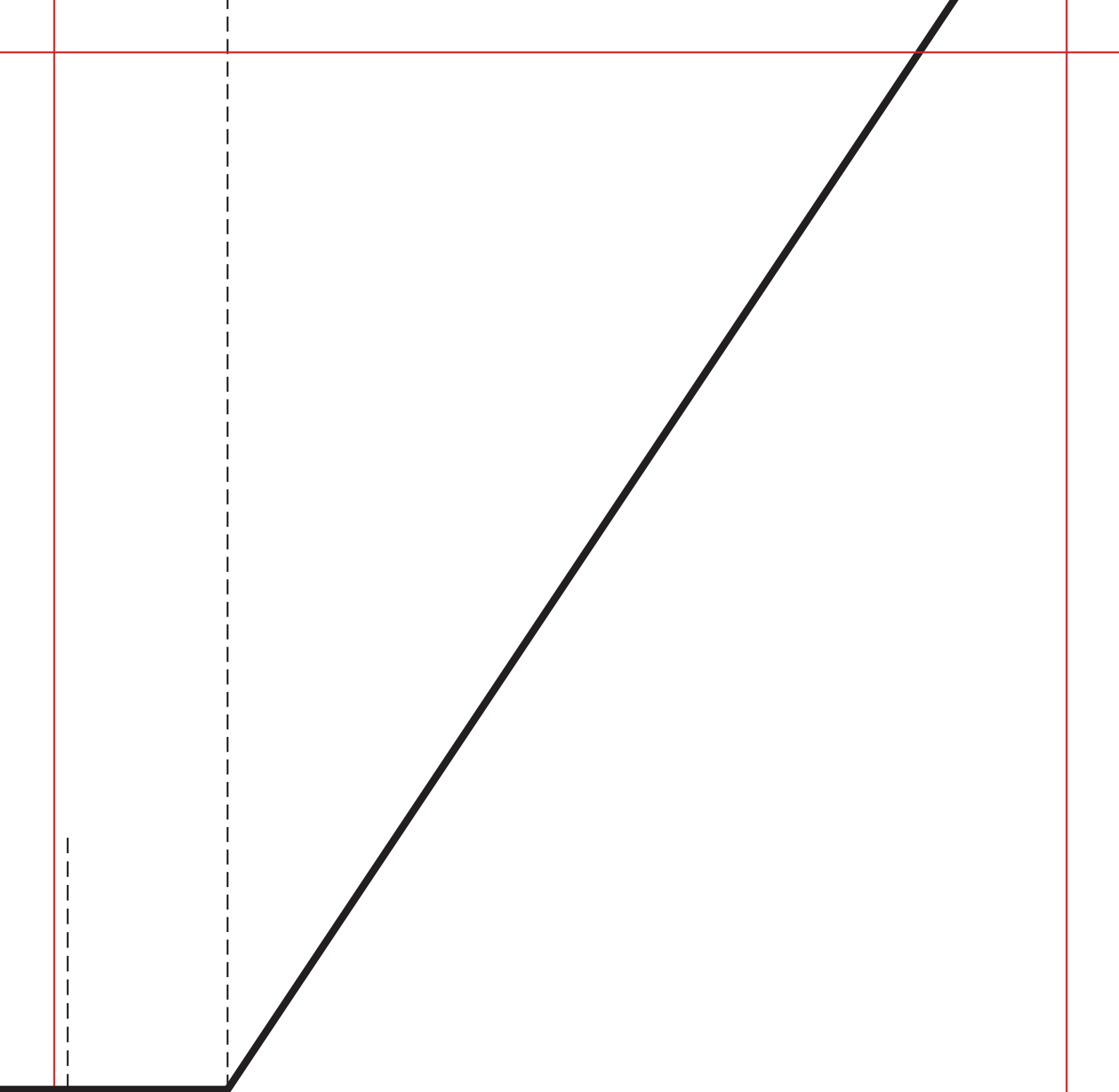


1.6

1.7

Schlaufe

1.8



1.9